

Current PDF workflow problems

- **The receiver of PDF document doesn't know how the document was distilled**
- **Preflight Tools don't give you the exact Distiller settings (e.g. JPEG compression factor)**
- **Correct setting of Distiller is difficult (too many options)**
- **For Highend-PDF the correct setup of Distiller is very important!**



DistillerTools (Shareware)

■ DistillerNotes 1.0

- Creates a note with a report on Distiller options

■ FontNotes 1.0

- Creates a note with font information (missing, substituted, available)

■ MakeStartup 1.0

- Stores current Distiller settings in a Startup file

■ MakeProlog 1.0

- Stores current Distiller settings in a set of prologue.ps / epilogue.ps files



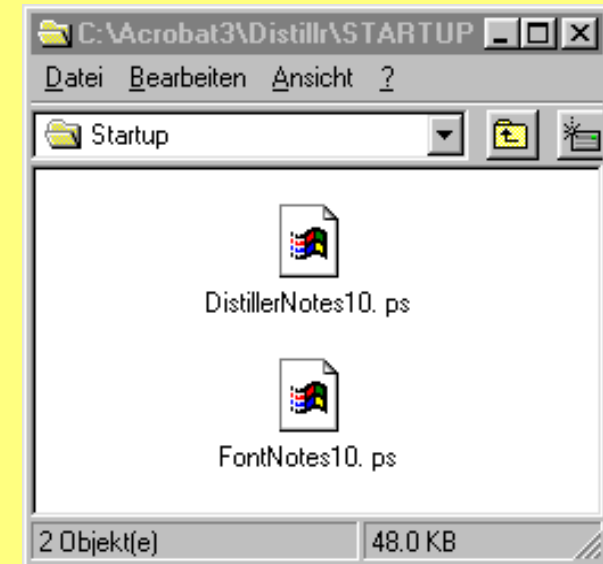
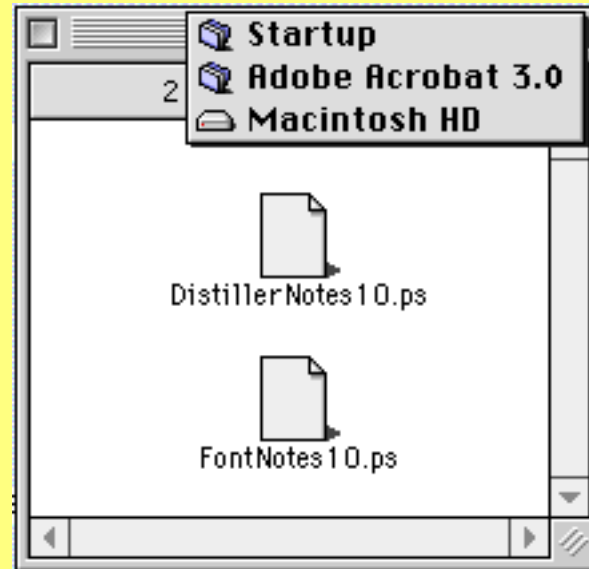
Developed by

- PrePress-Consulting, Switzerland
- Lupin Software, California

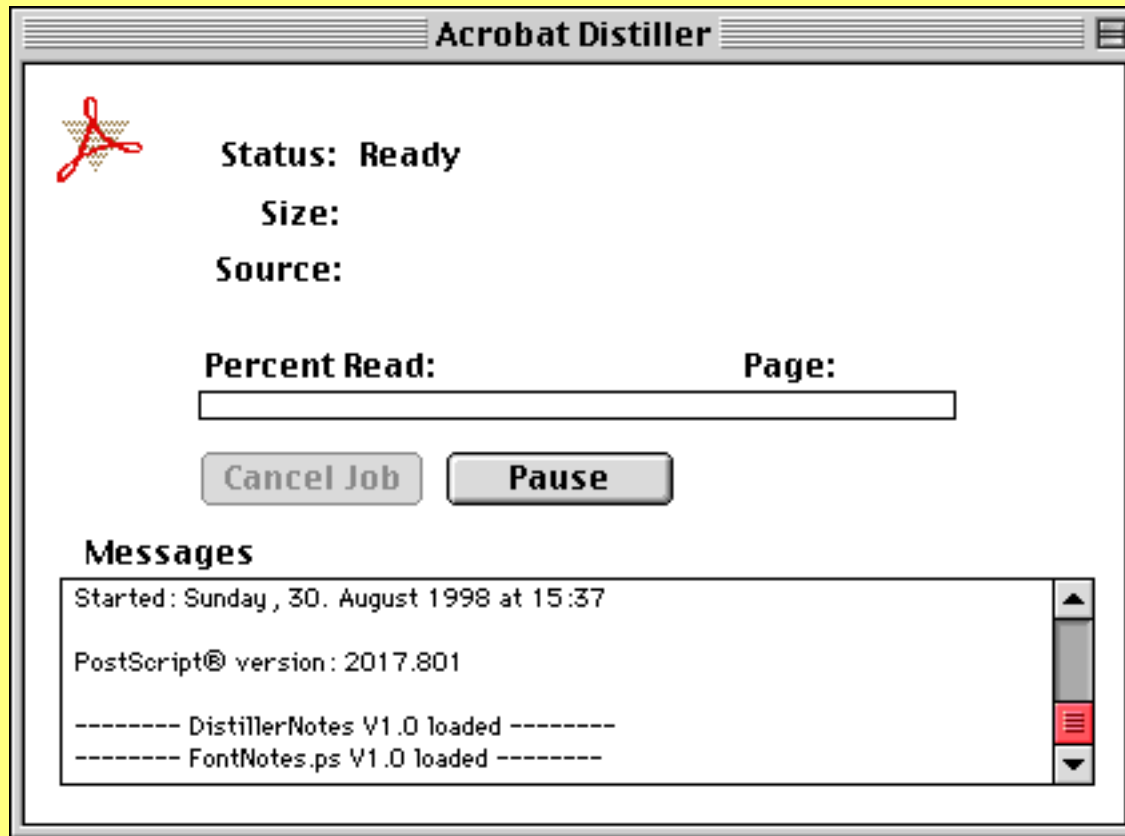


Installation

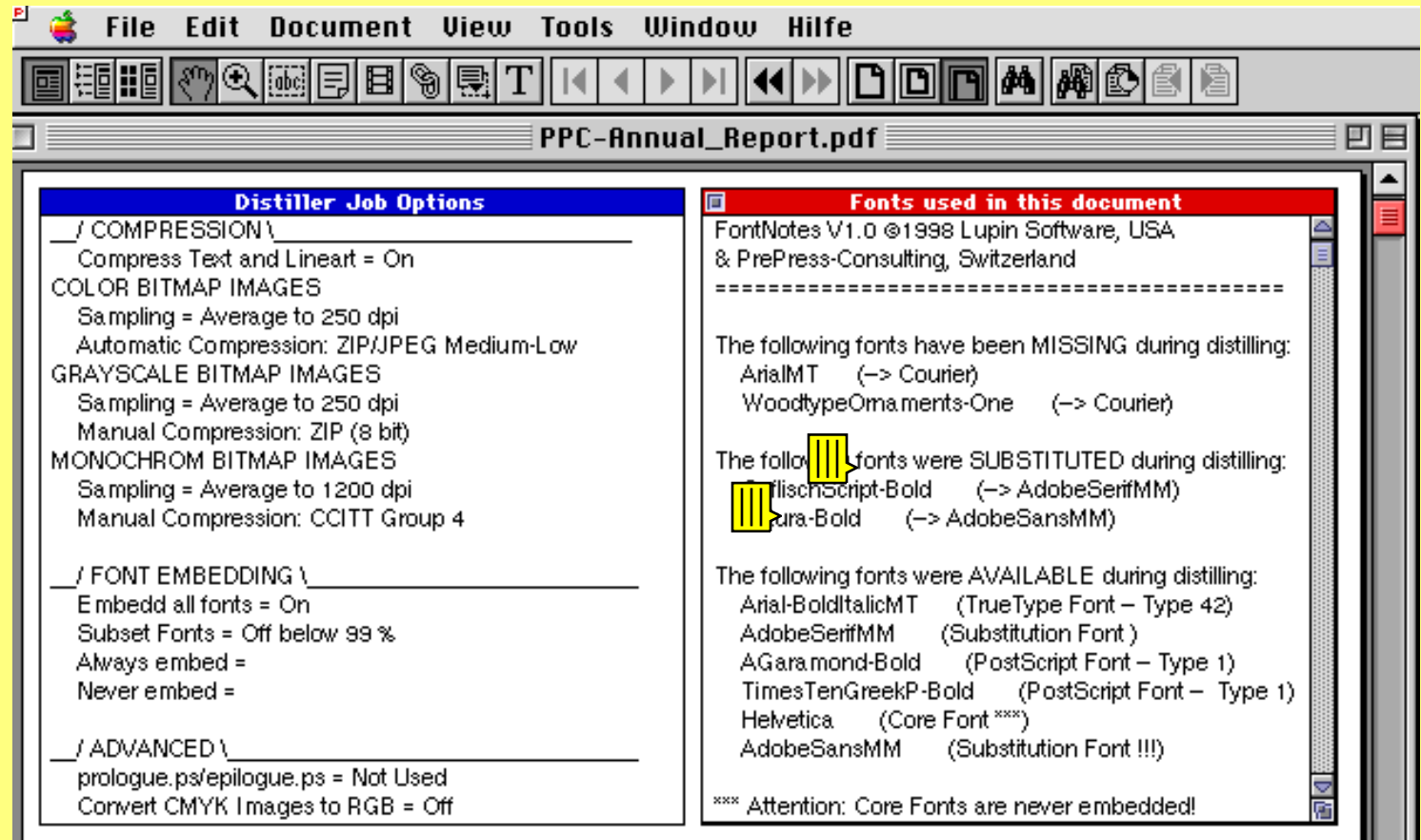
- Copy DistillerNotes.ps and FontNotes.ps in Startup folder/directory (Mac, Win, Unix)



Tools are loaded when Distiller starts



Notes on first page of each distilled document



The screenshot shows a window titled "PPC-Annual_Report.pdf" with a menu bar (File, Edit, Document, View, Tools, Window, Hilfe) and a toolbar. Two panels are visible:

Distiller Job Options

- / COMPRESSION \
Compress Text and Lineart = On
- COLOR BITMAP IMAGES
Sampling = Average to 250 dpi
Automatic Compression: ZIP/JPEG Medium-Low
- GRAYSCALE BITMAP IMAGES
Sampling = Average to 250 dpi
Manual Compression: ZIP (8 bit)
- MONOCHROM BITMAP IMAGES
Sampling = Average to 1200 dpi
Manual Compression: CCITT Group 4
- / FONT EMBEDDING \
Embed all fonts = On
Subset Fonts = Off below 99 %
Always embed =
Never embed =
- / ADVANCED \
prologue.ps/epilogue.ps = Not Used
Convert CMYK Images to RGB = Off

Fonts used in this document

FontNotes V1.0 ©1998 Lupin Software, USA
& PrePress-Consulting, Switzerland
=====

The following fonts have been MISSING during distilling:
ArialMT (-> Courier)
WoodtypeOrnaments-One (-> Courier)

The following fonts were SUBSTITUTED during distilling:
FrischScript-Bold (-> AdobeSerifMM)
Futura-Bold (-> AdobeSansMM)

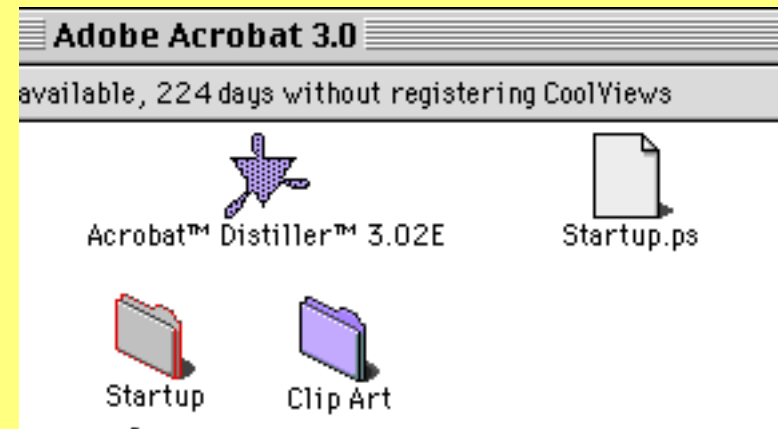
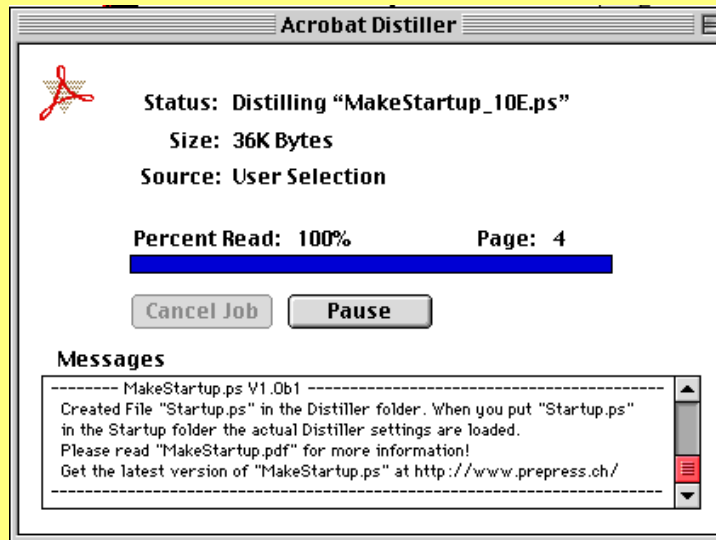
The following fonts were AVAILABLE during distilling:
Arial-BoldItalicMT (TrueType Font - Type 42)
AdobeSerifMM (Substitution Font)
AGaramond-Bold (PostScript Font - Type 1)
TimesTenGreekP-Bold (PostScript Font - Type 1)
Helvetica (Core Font ****)
AdobeSansMM (Substitution Font !!!)

**** Attention: Core Fonts are never embedded!

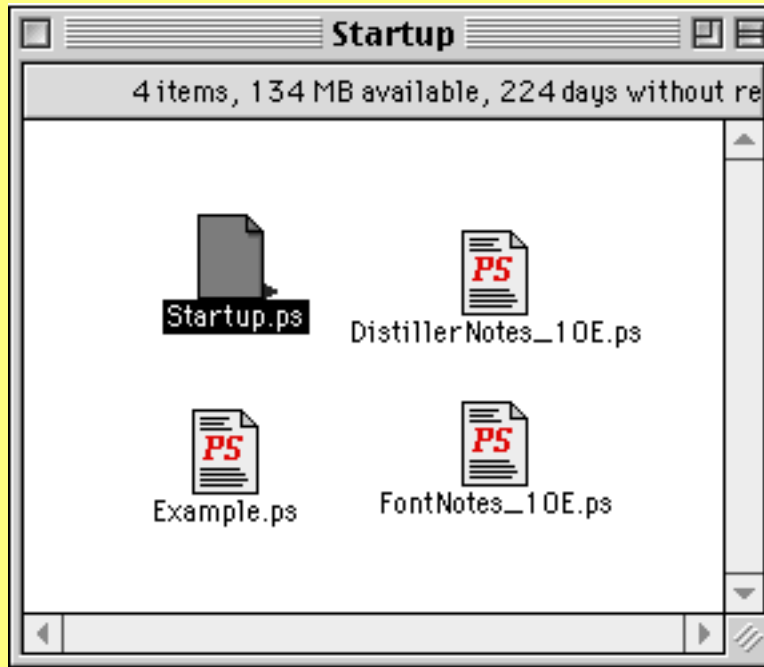


Distilling of MakeStartup.ps

- Reads out current Distiller Options
- Creates file "Startup.ps" in Distiller folder/directory

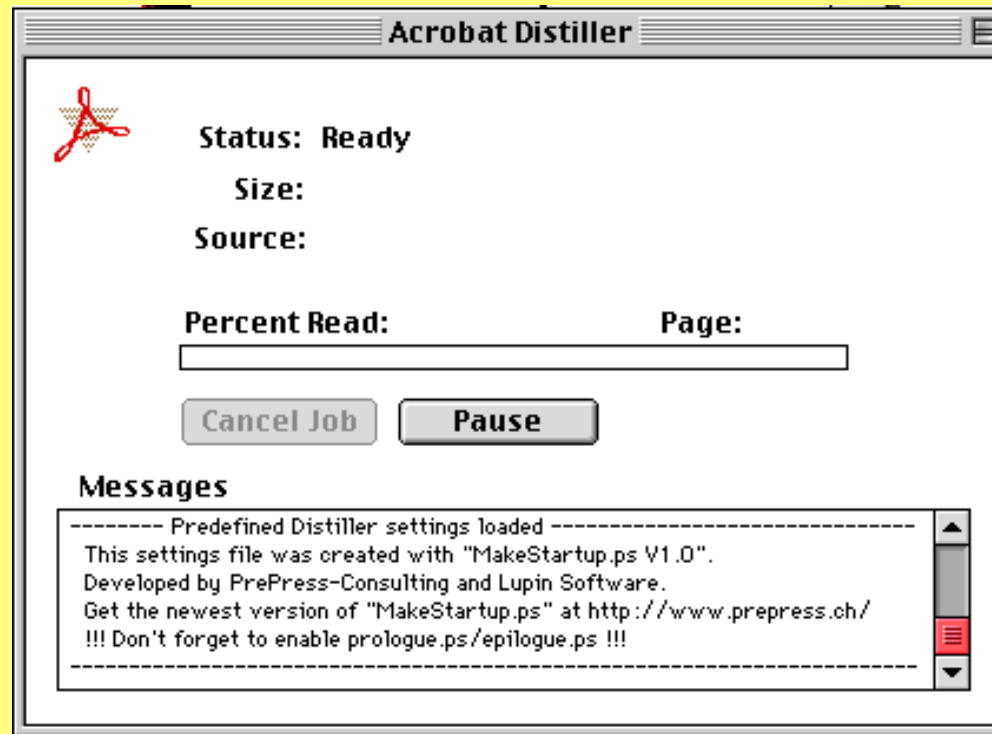


Place Startup.ps in Startup folder/directory



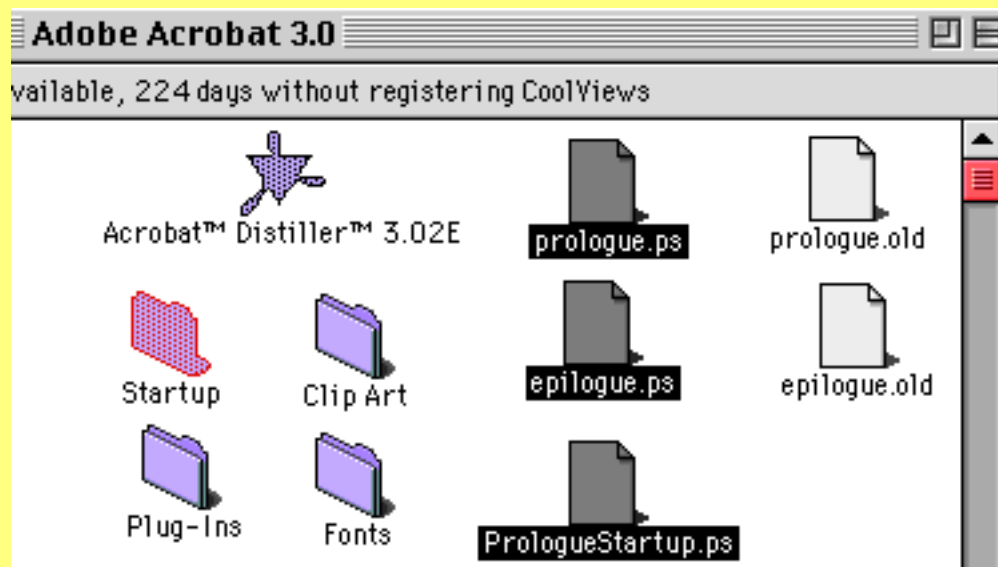
Settings are loaded when Distiller starts

- Every option can be defined except "Distill with Prologue.ps / Epilogue.ps"



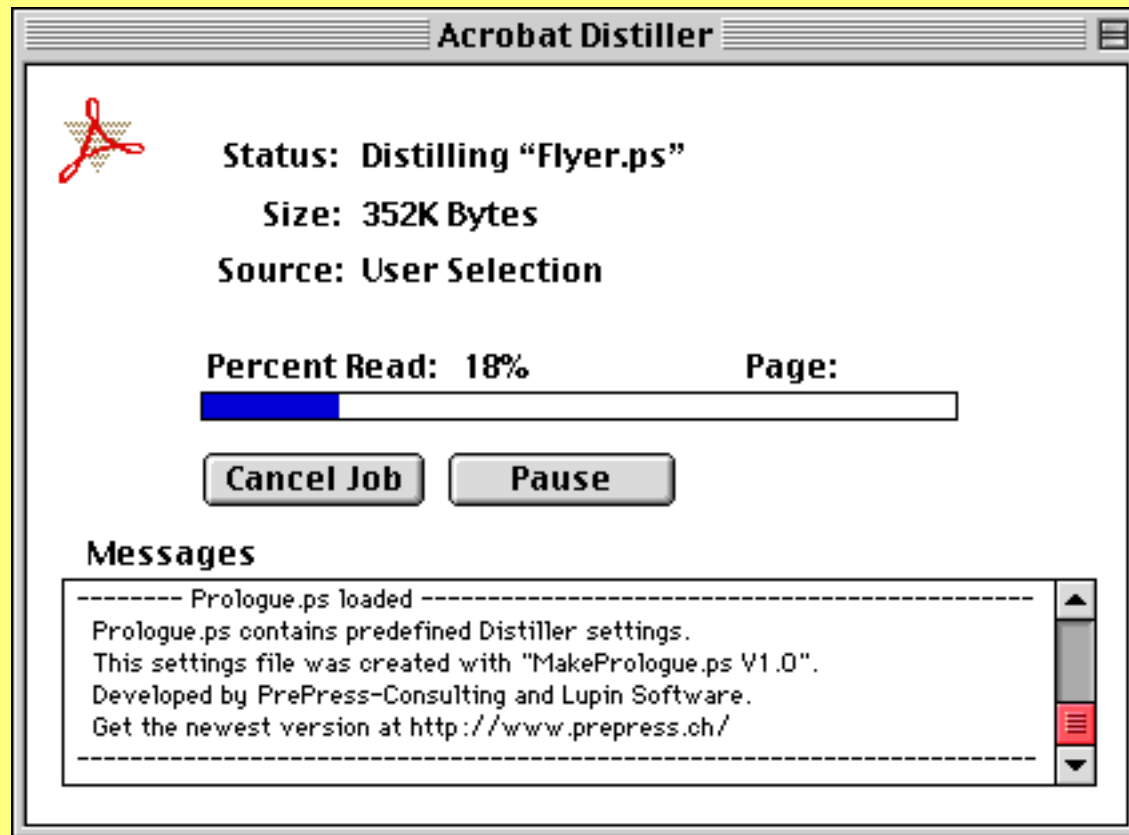
Distilling of MakePrologue.ps

- Reads the current Distiller Options
- Creates files "Prologue.ps", "Epilogue.ps" and "PrologueStartup.ps" in Distiller folder/directory that include the desired Distiller settings



Predefined settings are loaded before each PS file

- No changes by the user possible!



Sticky Notes

- developed by Bob Anderson, Compaq/Digital
- has built-in Distiller setting (fix)
- not all Distiller options reported (because they are not variabel)
- better job on fonts (e.g. font swapping)



[http://www.sw-publishing.digital.com/
Prepress/Download.htm](http://www.sw-publishing.digital.com/Prepress/Download.htm)



DistillerTools are Shareware

- Distribution over the Internet
- No fixed shareware price;
suggestion: 10% of the expected savings...
- If shareware concept is successful,
we will develop more tools
- We already have a lot of ideas
but suggestions are welcome...

Get your copy of DistillerTools at
<http://www.prepress.ch>

